

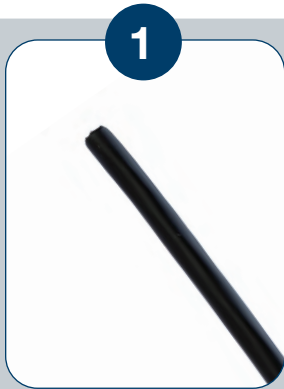
# Easy Connection of Outdoor Network Cameras!



Connecting outdoor cameras to Ethernet network cabling is easy using Panduit Field Term Plugs!



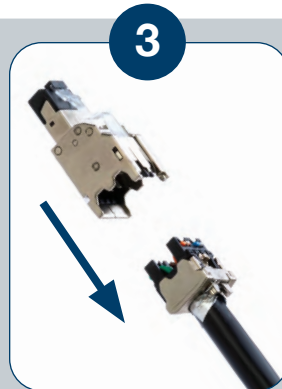
## Easy to Attach Field Term Plug



Loose cable end



Strip cable and attach wire cap



Insert wire cap into plug housing and snap together



Plug is ready

## Panduit Field Term Plug Options

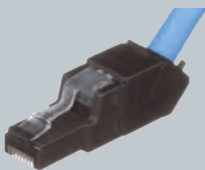
Made for easy on-site connection of network cabling

- Simple 2-piece plug assembly
- Install reliably in 60 seconds or less
- All plugs work with Category 5e, 6 and Category 6A cables
- Can re-terminate up to 20 times

### Plugs for Unshielded (UTP) Cabling Installs



Straight UTP Plug (FP6X88MTG)



45° Angled UTP Plug (FPUD6X88MTG)

### Plug for Shielded Cabling Installs



Straight Shielded Plug (FPS6X88MTG)

### Accessories



Termination Tool (EGPT)



Test Cord (FP6X88TC)



# AXIS® P3245-LVE Example

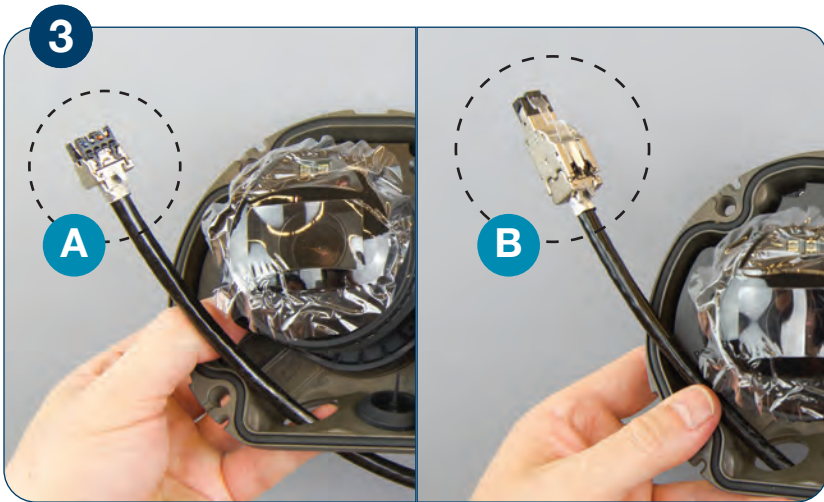
- Example shows cabling fed from behind mounting bracket
- Cabling fed from side of camera (direct or in conduit) is similar



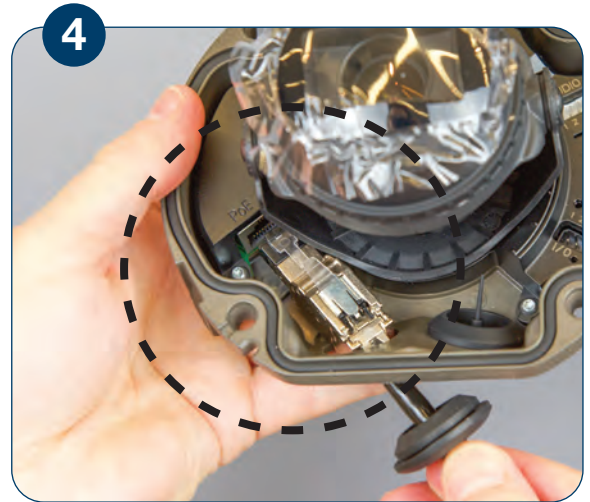
1 Locate cable stub and slide grommet over.



2 Insert cable stub through opening in camera.



3 Attach Panduit Field Term Plug to cable.



4 Insert Plug into port and place grommet into camera unit.



5 Route cable to avoid bends, mount camera and apply cover.

### IMPORTANT

- Follow the AXIS P3245-LVE Installation guide for detailed instructions
- Follow Panduit TX6A Field Term Plug detailed installation instructions



[www.panduit.com](http://www.panduit.com)